

WGS 84 POSITIONS can be plotted directly on this chart

© Copyright 2018. All rights reserved. No part of this product may be reproduced in any form (including photocopying or by electronic means) without prior permission.

RIVER HUMBER IMMINGHAM ROADS

DEPTHS IN METRES
SCALE 1 : 5000
SURVEYED BY
HARBOUR MASTER, HUMBER
ASSOCIATED BRITISH PORTS
Surveyed 26th November to 7th December 2018
Surveyed 16th to 27th October 2017

Depths are in metres and decimetres reduced to the chart datum given below
Underlined figures are drying heights in metres and decimetres above chart datum
Overhead clearance heights are above Highest Astronomical Tide

PLACE	TIDAL LEVEL AND CHART DATUM				Chart Datum and remarks
	M.H.W.S.	M.H.W.N.	M.L.W.N.	M.L.W.S.	
IMMINGHAM	7.3	5.8	2.6	0.9	3.9m below O.D. Newlyn Being approx. L.A.T.

TIDAL STREAMS REFERRED TO H.W. IMMINGHAM

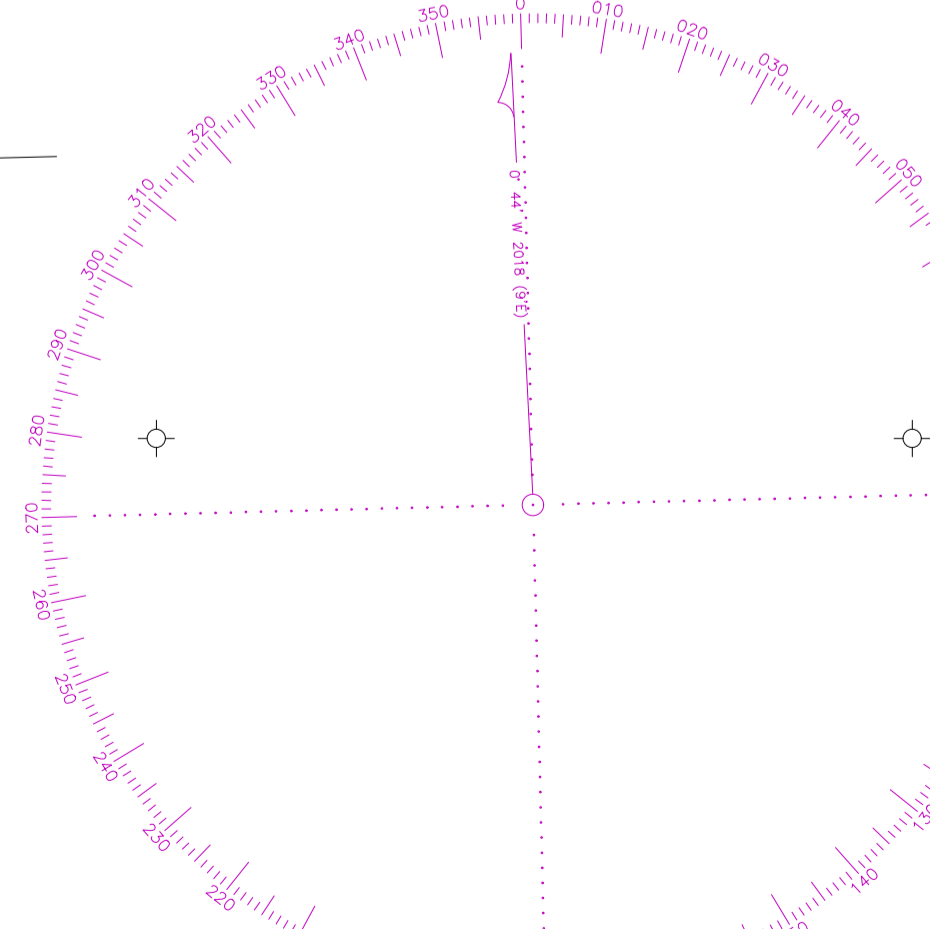
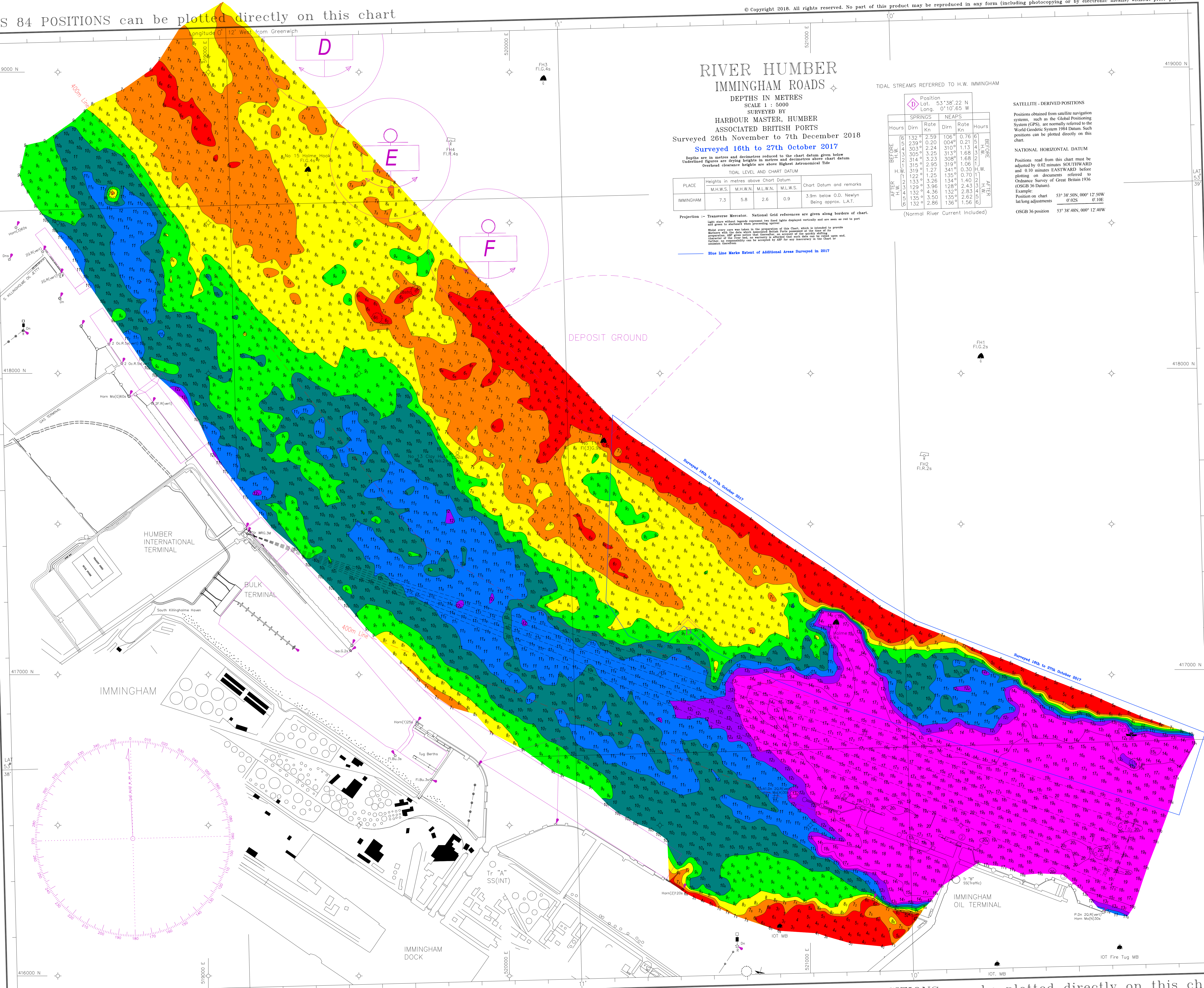
Position	SPRINGS		NEAPS		Hours
	Dirn	Rate	Dirn	Rate	
BEFORE H.W.	132°	2.59	106°	0.76	BEFORE H.W.
	239°	0.20	004°	0.21	
AFTER H.W.	303°	2.24	310°	1.13	AFTER H.W.
	314°	3.23	308°	1.68	
BEFORE H.W.	315°	2.95	319°	1.06	BEFORE H.W.
	122°	1.25	133°	0.30	
AFTER H.W.	129°	3.96	128°	2.43	AFTER H.W.
	132°	4.36	132°	2.83	
BEFORE H.W.	135°	3.50	135°	2.62	BEFORE H.W.
	132°	2.86	136°	1.56	

SATELLITE-DERIVED POSITIONS
Positions obtained from satellite navigation systems, such as the Global Positioning System (GPS), are normally referred to the World Geodetic System 1984 Datum. Such positions can be plotted directly on this chart.

NATIONAL HORIZONTAL DATUM
Positions read from this chart must be adjusted by 0.02 minutes SOUTHWARD and 0.10 minutes EASTWARD before plotting on documents referred to Ordnance Survey of Great Britain 1936 (OSGB 36 Datum).
Example:
Position on chart 53° 38' 50N, 000° 12' 50W
lat/long adjustments 0° 02S 0° 10E
OSGB 36 position 53° 38' 48N, 000° 12' 40W

Projection - Transverse Mercator. National Grid references are given along borders of chart.
Signs used without special remark: see flood lights displayed vertically and are seen as red to port and green to starboard when proceeding upriver.
While every care was taken in the preparation of this chart, which is intended to provide information with the data which associated British Ports possess at the time of its production, all users are advised that the chart is not a guarantee of accuracy and that each user should verify the accuracy of the information for their own purposes.
Further, no responsibility can be accepted by the Admiralty in the Chart or in any other form.

Blue Line Marks Extent of Additional Areas Surveyed in 2017



WGS 84 POSITIONS can be plotted directly on this chart